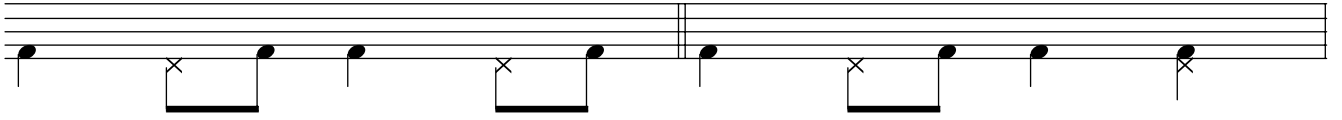


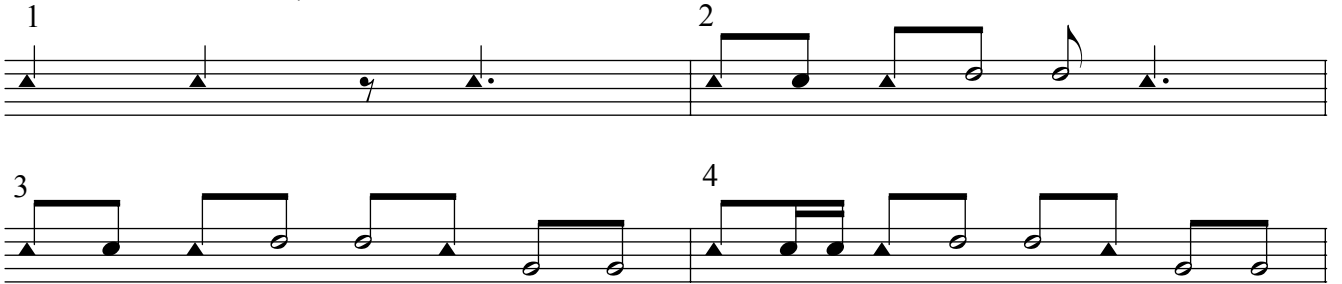
Rumba

Samba Bass Linie

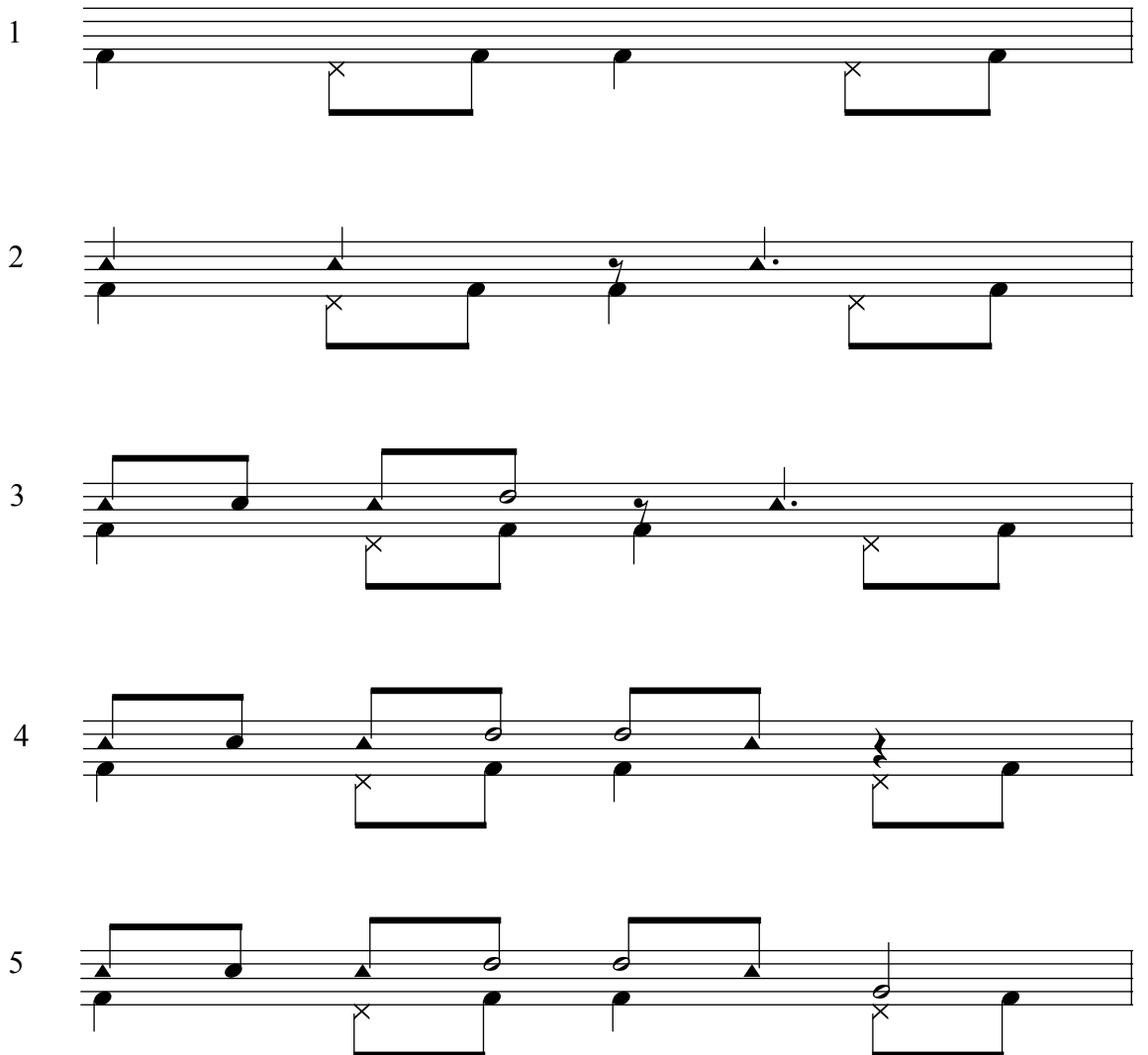
Rumba Bass Linie



Rim Click und Toms, Basic Pattern



Rumba Aufbau mit Sambabass



6

7

Detailed description: This block contains two musical staves, labeled 6 and 7. Each staff consists of a treble clef and a bass clef. The bass clef part features a Rumba bass pattern: a quarter note on the second line (G), followed by a dotted quarter note on the second space (A), and a quarter note on the second line (G). The treble clef part contains a melodic line with eighth and quarter notes, often beamed together. In measure 6, the treble line starts with a quarter note on the first space (F), followed by a quarter note on the second line (G), a quarter note on the second space (A), and a quarter note on the second line (G). In measure 7, it starts with a quarter note on the first space (F), followed by a quarter note on the second line (G), a quarter note on the second space (A), and a quarter note on the second line (G).

Rumba Aufbau mit Rumba Bass

Detailed description: This block contains five musical staves, each with a treble and bass clef. The bass clef part of each staff is identical, showing the Rumba bass pattern: a quarter note on the second line (G), followed by a dotted quarter note on the second space (A), and a quarter note on the second line (G). The treble clef part shows a developing melody. The first staff has a quarter note on the first space (F), followed by a quarter note on the second line (G), a quarter note on the second space (A), and a quarter note on the second line (G). The second staff has a quarter note on the first space (F), followed by a quarter note on the second line (G), a quarter note on the second space (A), and a quarter note on the second line (G). The third staff has a quarter note on the first space (F), followed by a quarter note on the second line (G), a quarter note on the second space (A), and a quarter note on the second line (G). The fourth staff has a quarter note on the first space (F), followed by a quarter note on the second line (G), a quarter note on the second space (A), and a quarter note on the second line (G). The fifth staff has a quarter note on the first space (F), followed by a quarter note on the second line (G), a quarter note on the second space (A), and a quarter note on the second line (G).