

Amorada

W.De Azevedo / Arr.A. Aeppli

Bass

D7

1



D7

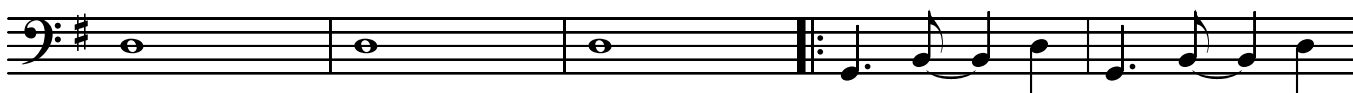
D7

D7

G

G

6



Gm

Gm

G

D7

11



G

G/F

E^b

D7

G

G

D7

D7

15

1

2



G

g

D7

D7

G

21



G

D7

D7

G

G

26



D7

D7

G

G

G

31



G

Gm

Gm

G

D7

36



G

G/F

E^b

D7

G

G

§

D7

41

1

2



Amorada Bass

46 D7 G G D7 D7 G

52 G D7 D7 D7 G G G D7 D7

58 D7 \emptyset G G Gm Gm

63 Cm Cm D7/F# D7 Edim

68 D7 Edim/C#

72 Edim/C# D7 D7 Edim/C# D7

77 Edim/C# G D7 G G

82 G G Gm Gm G D7/F#

88 G G/F E \flat D7 G G *D.S. al Coda*

92 \emptyset G Gm/F Am/E D7 G