

Ätsch-Bätsch

Andreas Aeppli

The musical score for 'Ätsch-Bätsch' is written for a single melodic line and a single bass line. The piece is in common time (C) and begins with a forte (*f*) dynamic. The score is divided into measures, with measure numbers 1 through 9 indicated above the melodic line. The melodic line consists of eighth and quarter notes, while the bass line features a mix of eighth and quarter notes, often with a syncopated feel. A large '2' is placed above the second measure of the bass line, and a large '3' is placed above the third measure of the bass line. The piece concludes with a final measure (measure 9) that features a long, sustained note in the bass line.

12 13

14 15 *f*

16 17

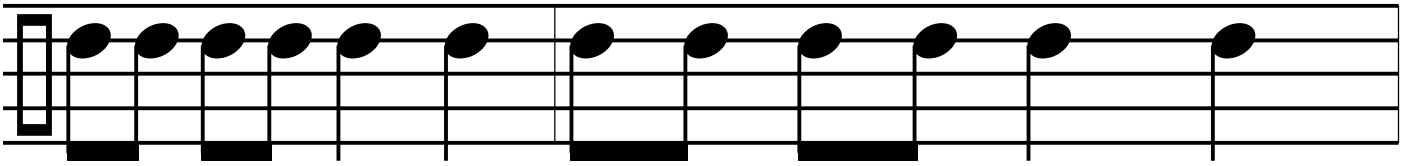
18 19 *mf*

20 21 3

f

24

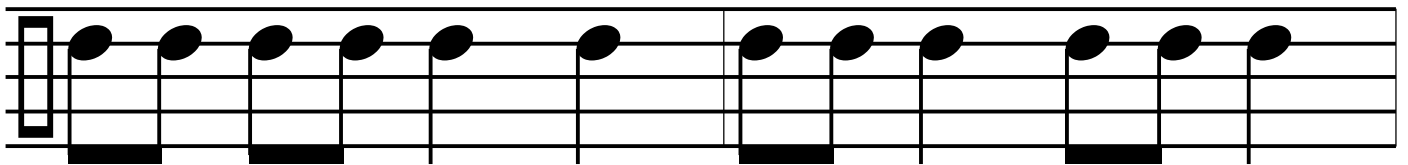
25



mf

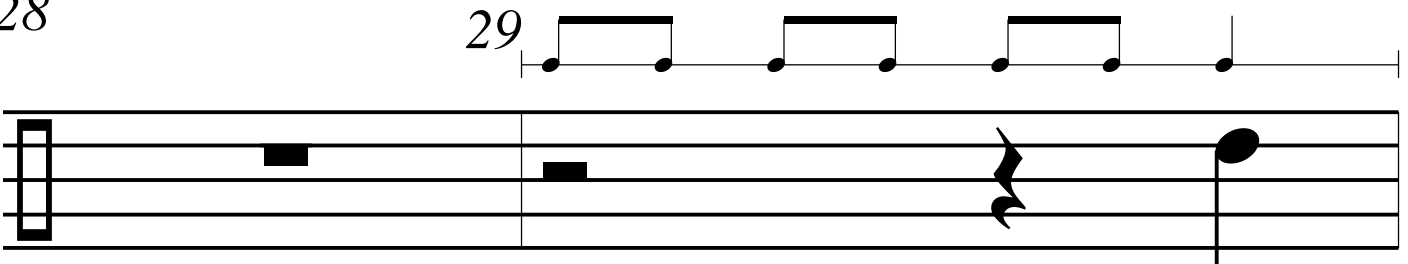
26

27



28

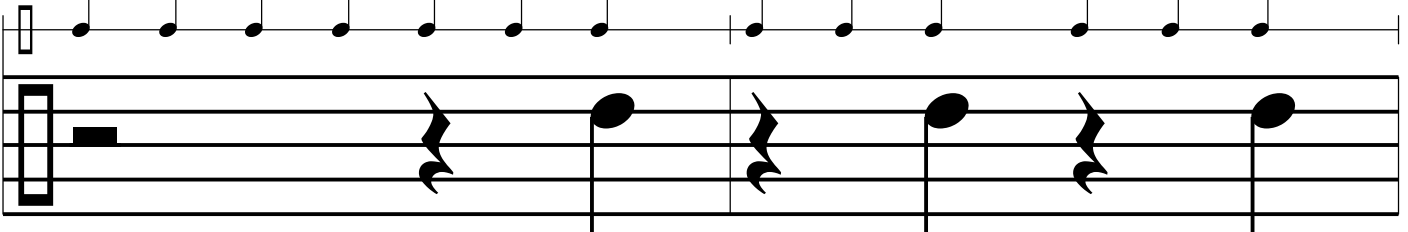
29



f

30

31



32

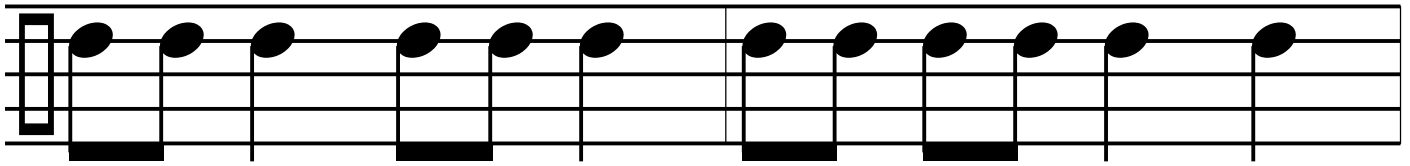
33

6



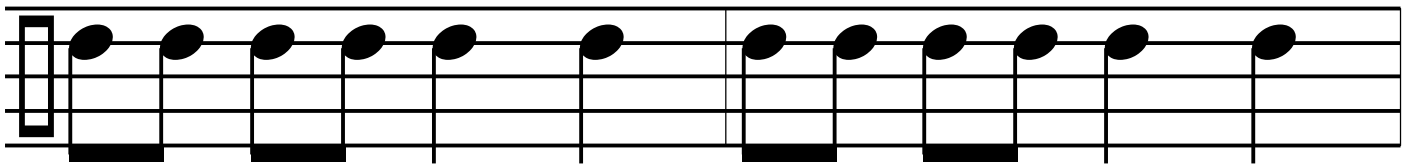
39

40

*mf*

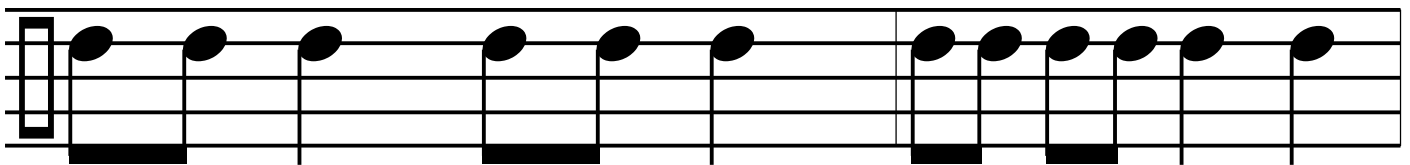
41

42

*f*

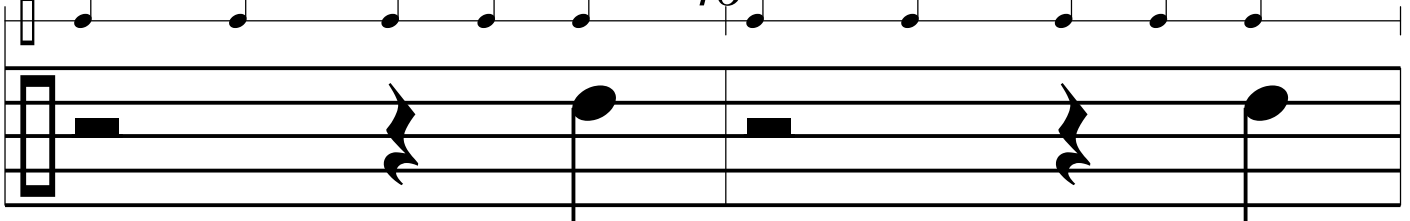
43

44



45

46

*p*

47

48



49 50

f

51 52

mp

53 54

f

55 56

57 58

59

60

2

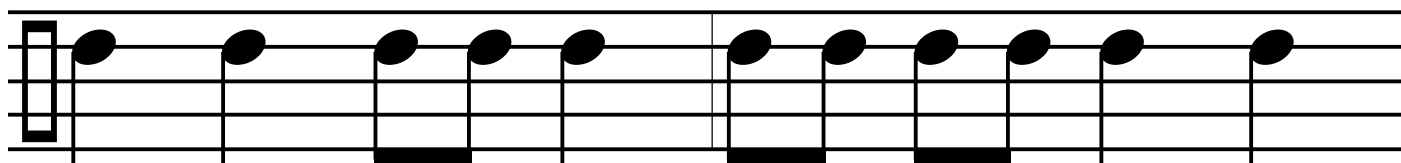
62

63

3

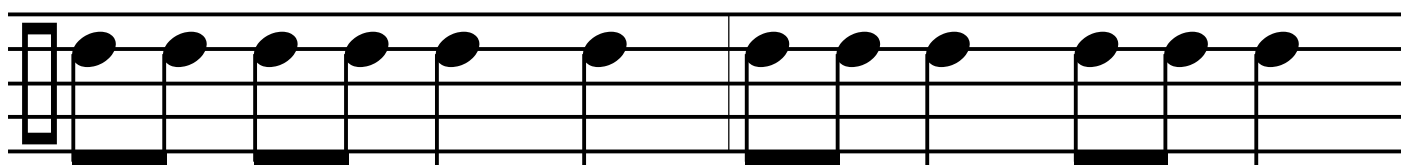
66

67

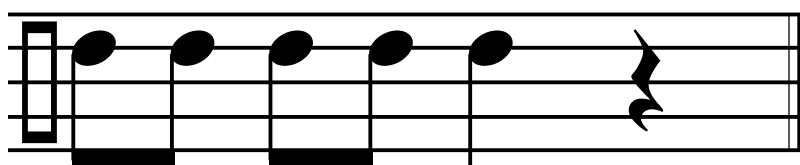


68

69



70

***ff***