

Ätsch-Bätsch

Andreas Aeppli

Tom mittel

1 *c* 2 *f* 3 4 5 7 8 9

12 13

14 15

f

16 17

18 19

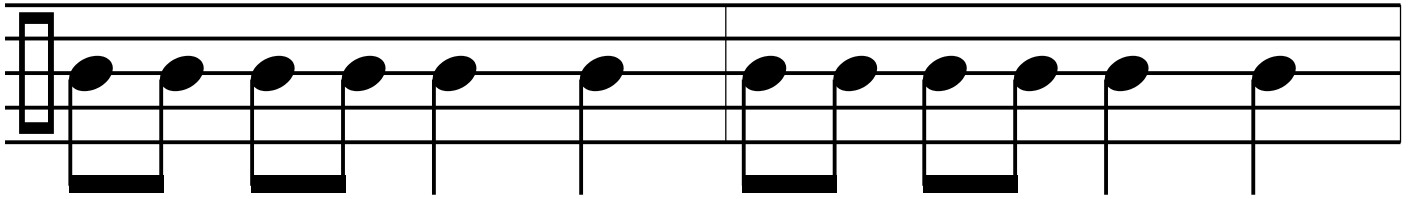
mf

20 21

f 3

24

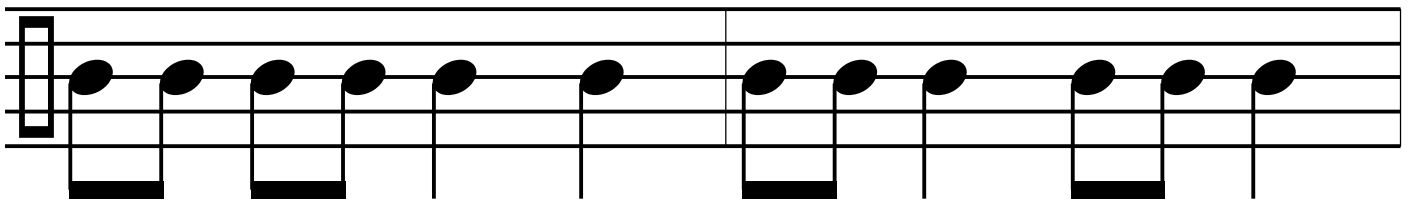
25



mf

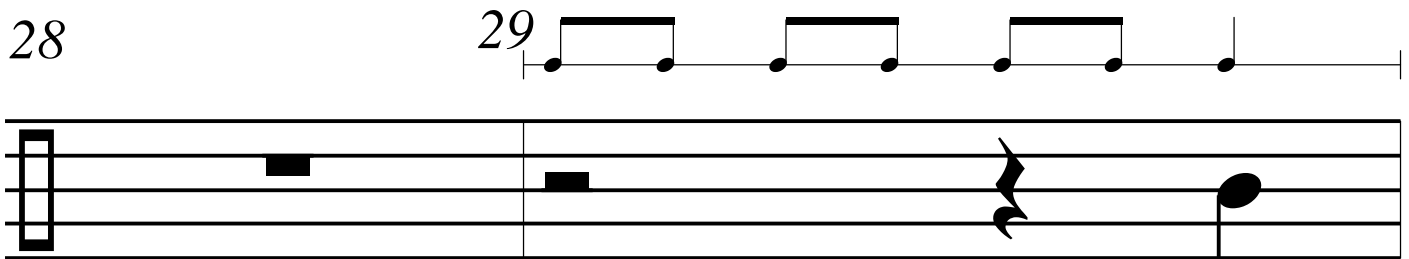
26

27



28

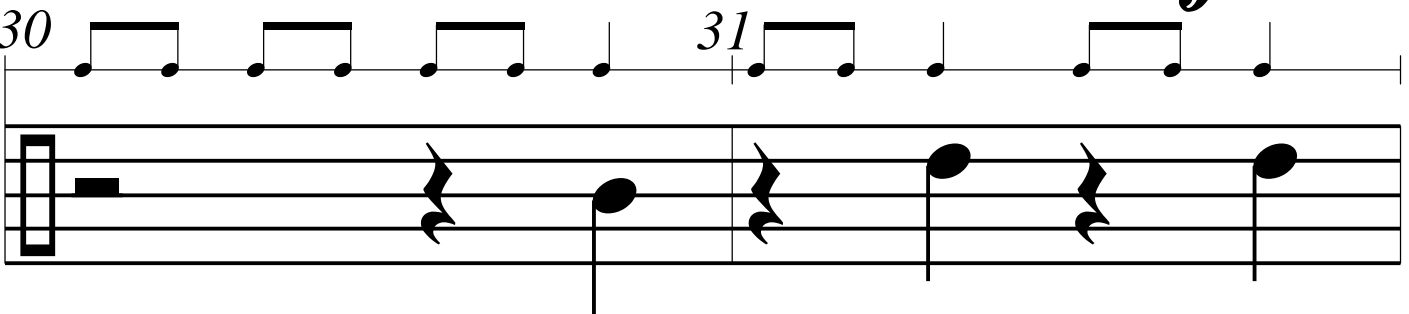
29



f

30

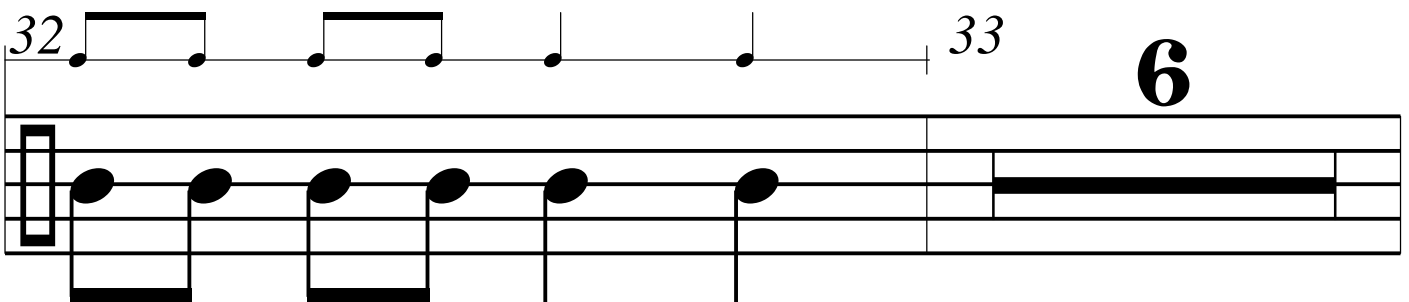
31



32

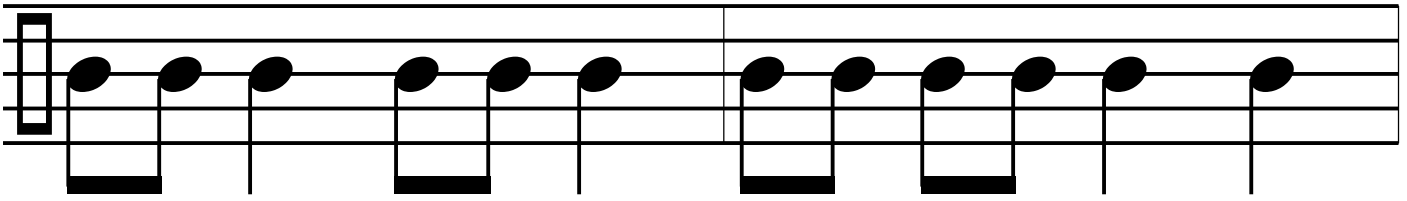
33

6



39

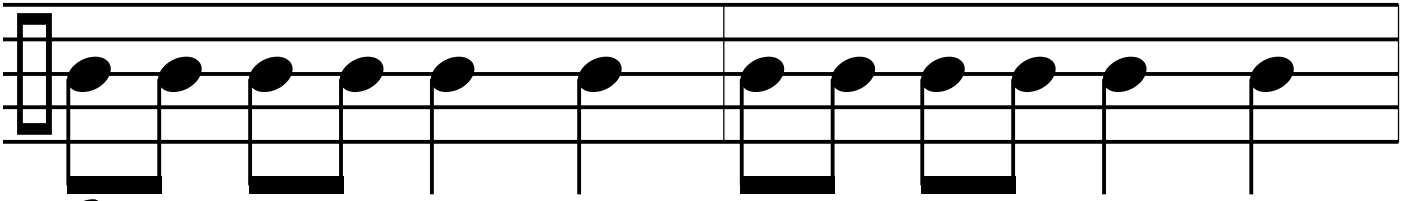
40



mf

41

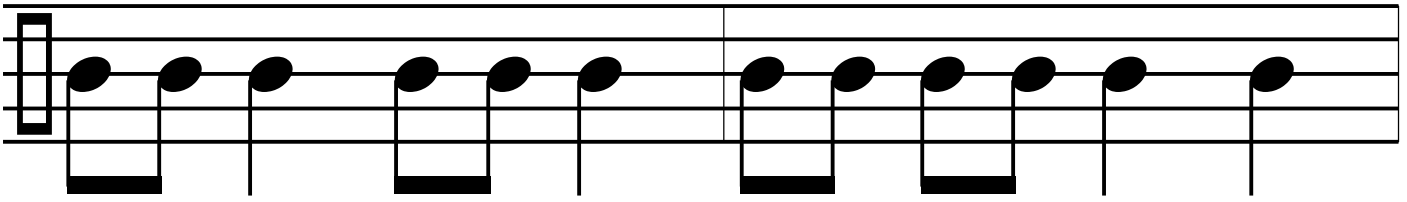
42



f

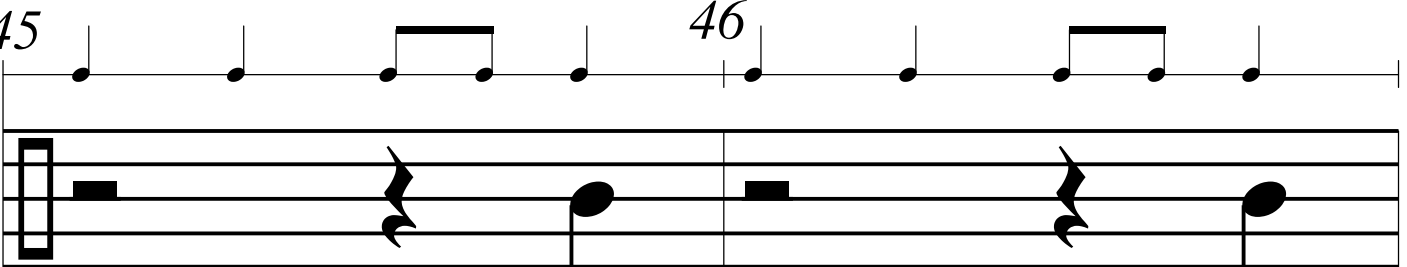
43

44



45

46



p

47

48



49 50

51 52

f

mp

53 54

55 56

f

57 58

57 58

59 60

61 62

63 66

3

67 68

69 70

ff