

# Stille Nacht

Franz Xaver Gruber

Arr. Andreas Aeppli

Tambourin  
Becken

## 1. Strophe

Musical notation for the first strophe of 'Stille Nacht' for Tambourin and Becken. The piece is in 3/4 time, indicated by a '3' over a '4' in a box. The notation consists of seven staves, each starting with a measure number (7, 11, 15, 19, 23) and a square box icon. The notes are quarter notes with 'x' marks above them, indicating where to strike the instrument. A dynamic marking 'p' (piano) is placed below the first staff.

## 2. Strophe

Musical notation for the second strophe of 'Stille Nacht' for Tambourin and Becken. The notation consists of five staves, each starting with a measure number (27, 31, 35, 39, 43) and a square box icon. The notes are quarter notes with 'x' marks above them, indicating where to strike the instrument.

# Stille Nacht

2  
47



## 3. Strophe

51



55



59



63



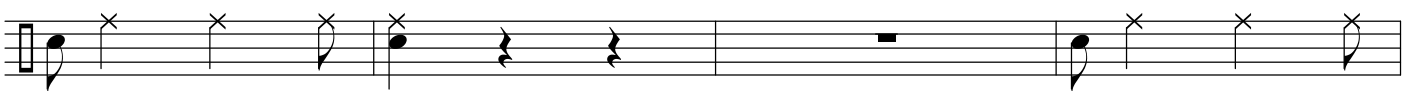
67



71



75



79

